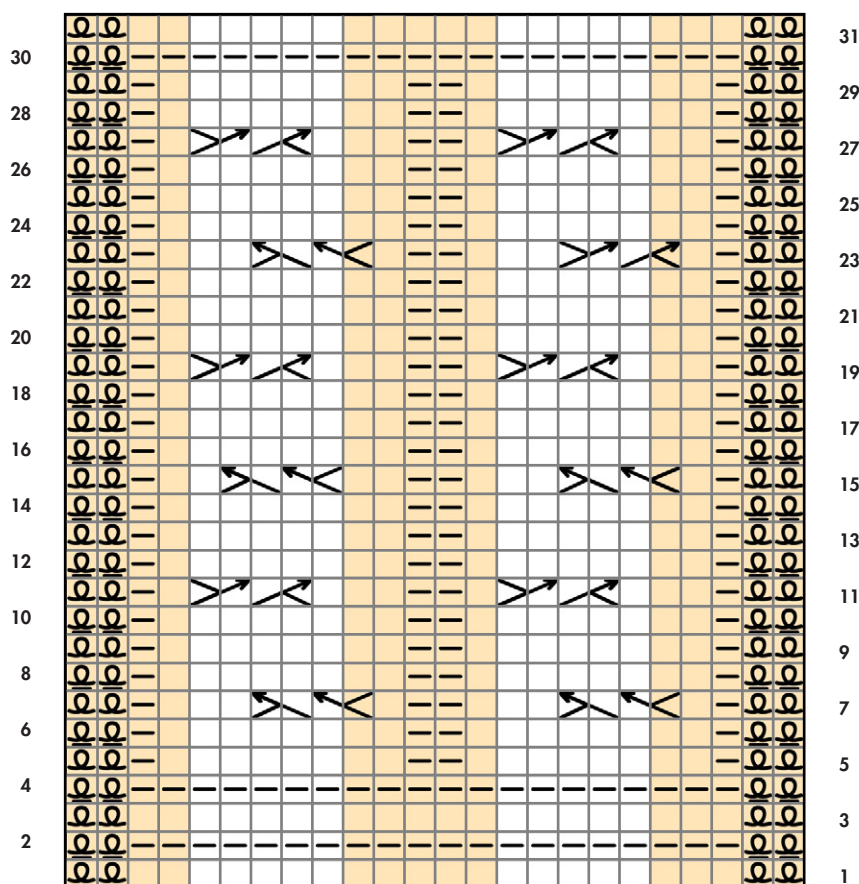


LACE & CABLE SURGERY HOMEWORK - Romi Hill

Please note that the cable chart below is "What You See Is What You Get" and not "What You See Is What You Knit" as the lace chart was. In other words, the chart shows the pattern on the right side. Right side rows are worked right to left and wrong side rows are worked left to right. The borders will be in garter stitch and the mid-section will be in stockinette stitch.




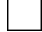
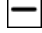


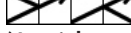
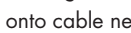
KEY TO CHART SYMBOLS	
	no stitch
	RS: knit; WS: purl
	RS: purl; WS: knit
	RS: knit through back loop
	WS: knit through back loop
	c2r2b (4 st right cross cable): slip 2 sts onto cable needle and hold to back, k2, k2 off cable needle
	c2l2b (4 st left cross cable): slip 2 sts onto cable needle and hold to front, k2, k2 off cable needle

Chart 2 - mistakes

Cast on 24 stitches to work chart